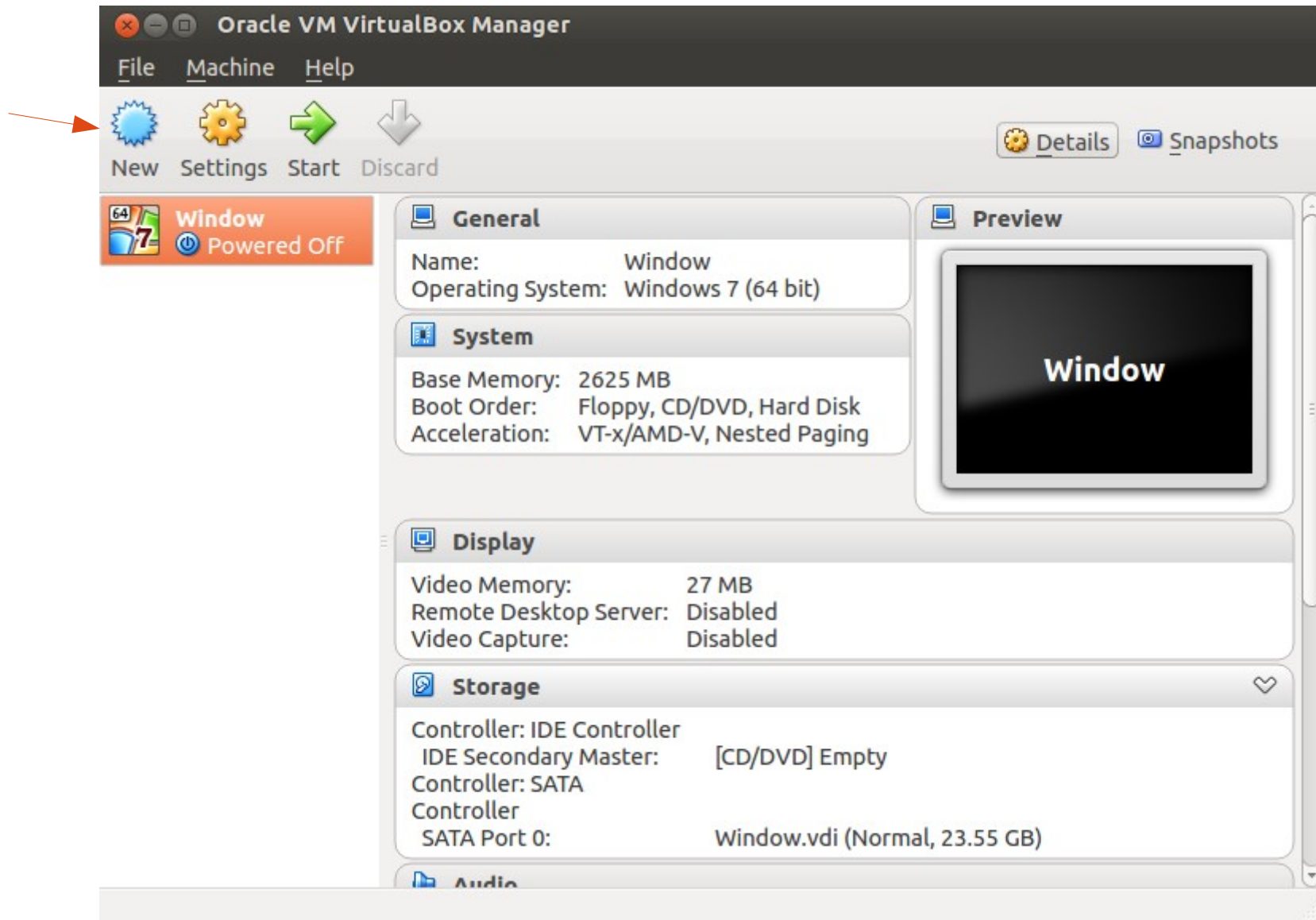
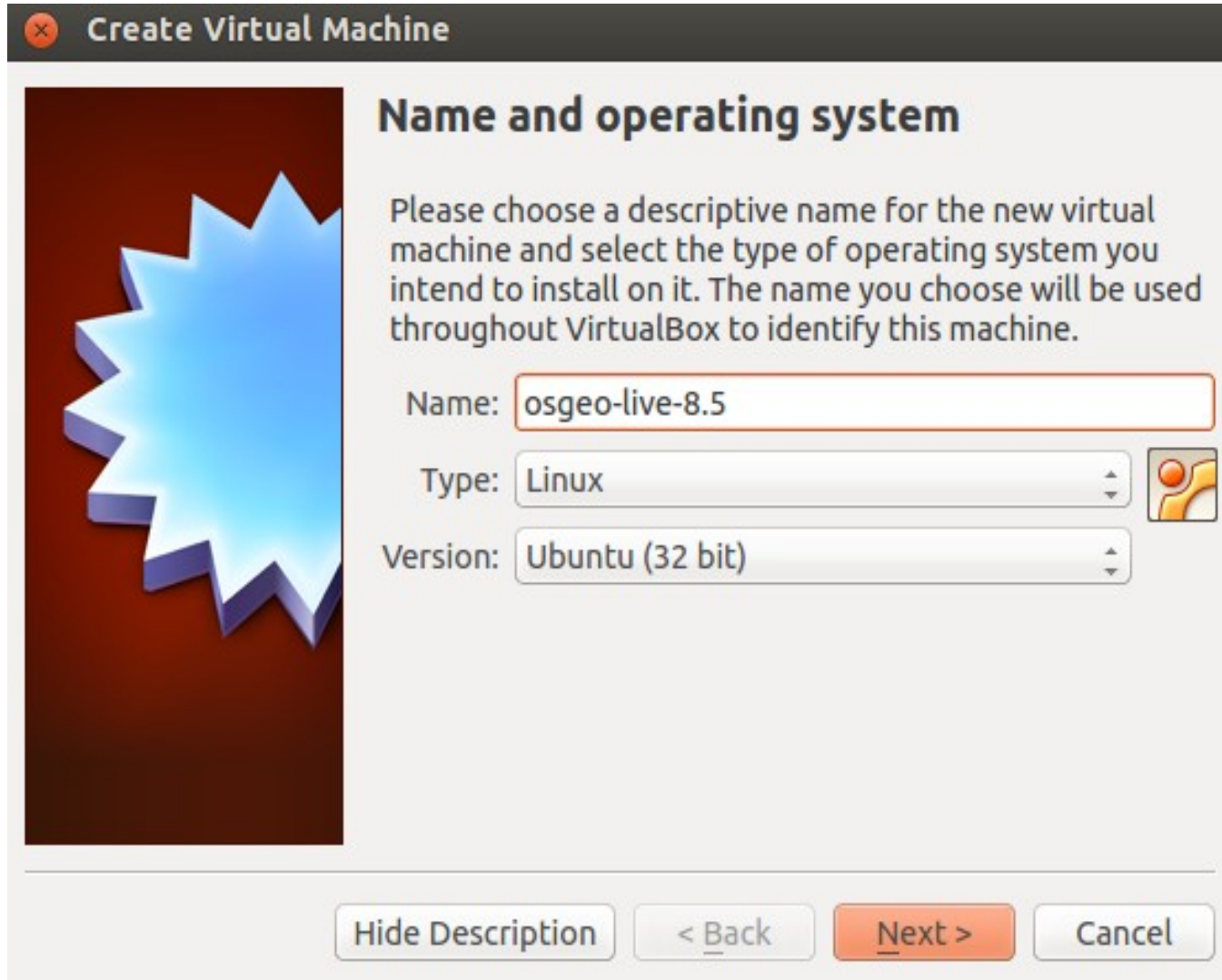


# Install Linux Virtual Machine

Start the VirtualBox application and click on the New button to create a new VM, and then Next.



Enter a name such as osgeo-live-8.5, and choose Linux as the “Operating system”, and Ubuntu (32bit) as “Version”.




**Create Virtual Machine**

### Name and operating system

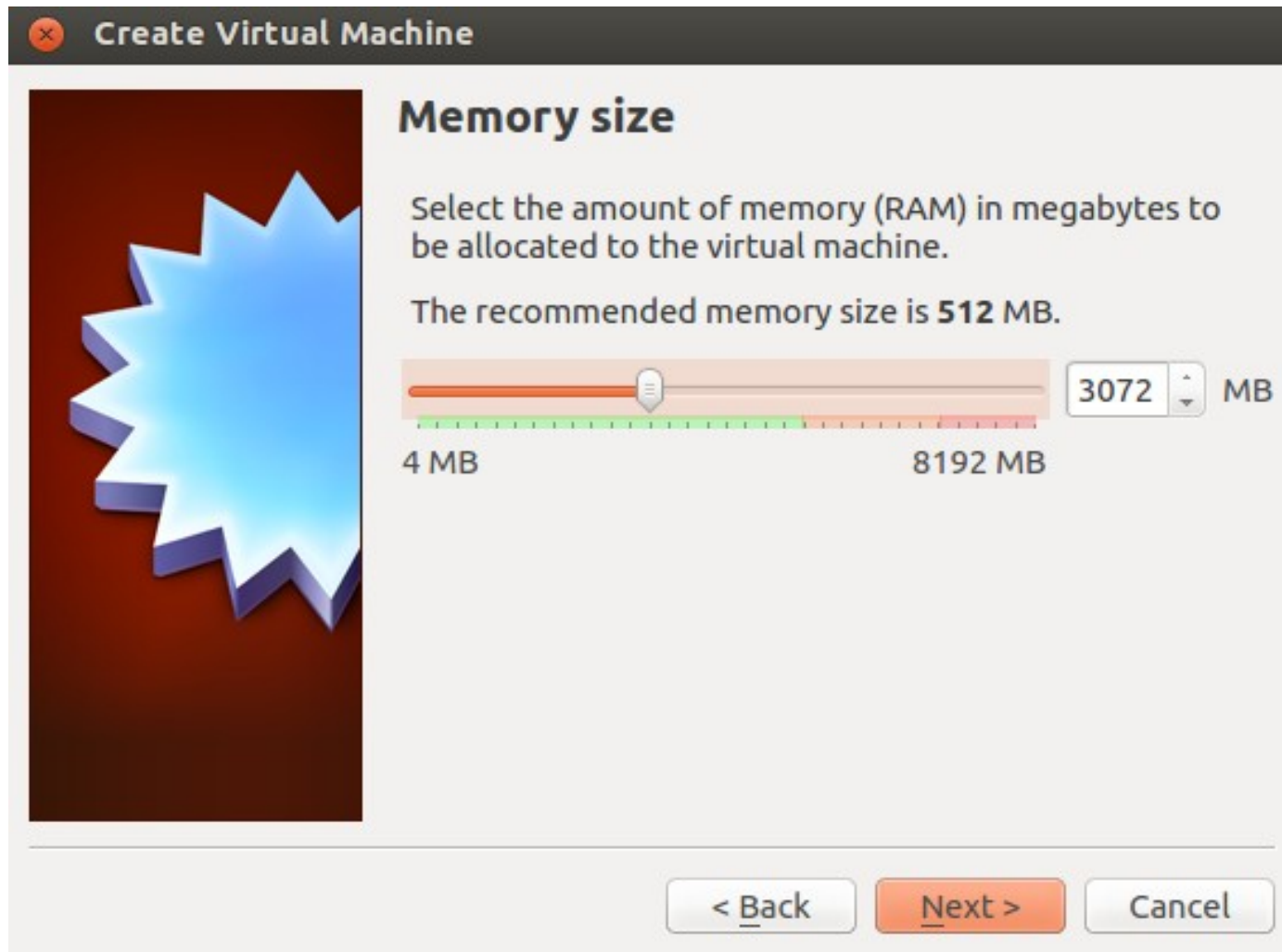
Please choose a descriptive name for the new virtual machine and select the type of operating system you intend to install on it. The name you choose will be used throughout VirtualBox to identify this machine.

Name:

Type:  

Version:

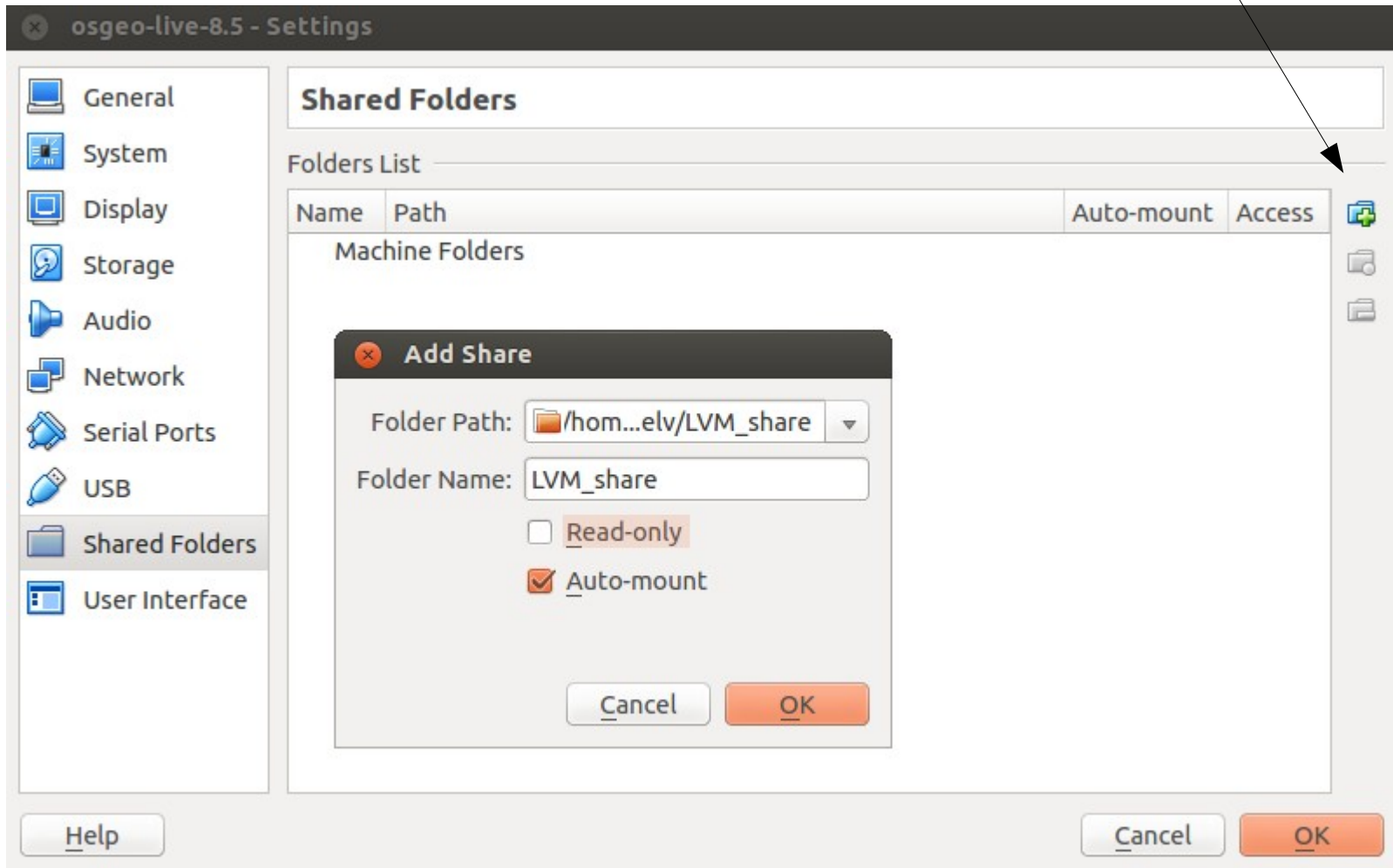
Set the memory Size (3G). The dedicate RAM for the VM can change according to the RAM of your host-pc. Do not overpass the green area!



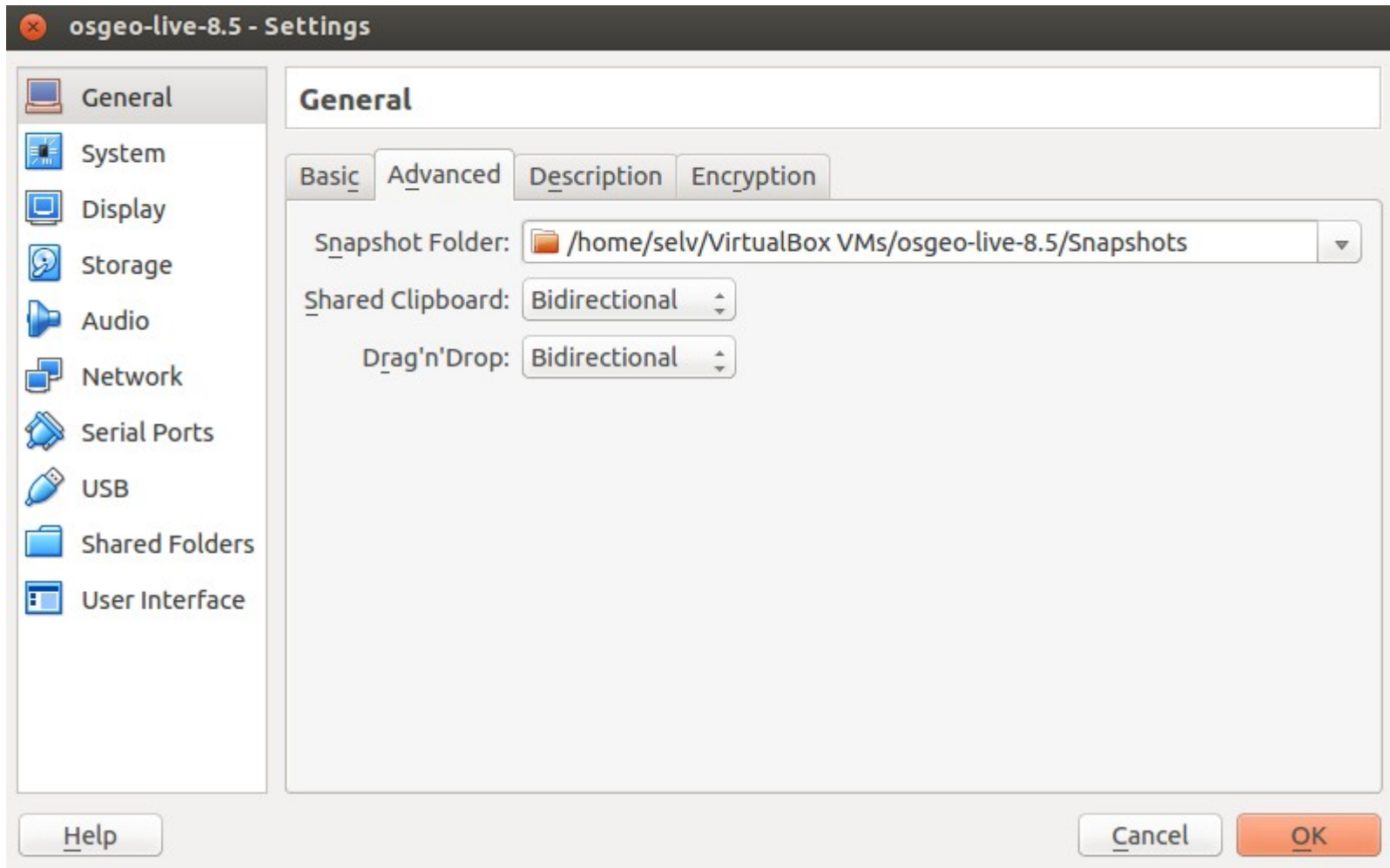
Choose “Use existing hard drive”. Now click on the button (a folder icon) to browse to where you saved the osgeo-live-8.5.vbox file. Select this file, press Next and Create.



Create a LVM\_share folder under your /home/user or documents. Navigate in the directory and select the LVM\_share folder. Activate the Auto-mount option and click OK



Set Shared Clipboard and Drag and Drop to Bidirectional Optional.  
Do not change the Snapshot Folder



At this point you can press the start arrow to boot the Linux Virtual Machine

